

Mouso Bwe

(last edited on 16 October 2020)

Mouso Bwe is a Bambara rhythm and literally means: The (black) woman with the light skin. There are a number of separate melodies, each followed by a corresponding song. Each part (of melody plus vocals) is played twice, and Pattern B is played between melodies and during the vocals.

1 . *Tsja, tsja, tsja barafola konobaraba, I bolo bon ka baya djouroukan gnewa*

Tsja, tsja, tsja Bara player, with your big belly, take your hands (bolo) off my beaded belt (baya), so that I can go

2a. *Awa, a yé na yé,*

2b. *Ee, ee, Awa, a yé na yé*

2c. *Mouso bwe, wéré wéré, a yé mi yé (2x)*

See here Awa (a woman's name), the light-skinned woman

3a. *Ee, moggo mi kera kaba, sali(a) moggo mi kera kaba*

3b. *Ee sali(a), moggo mi kera kaba, djawara wolo maloya ba na*

4a. *Ee lé kolo, é lé kolo, nja ma mogo dè nji kalo sa ra bè ba*

4b. *Ee lé kolo, é lé kolo, nja ma mogo dè ga ba ra wa re ben ba*

5a. *Ko ne ma longo sounourouba o bêtê, ka kan meleni nege nege nege ka-an ya moggo dèn wa ri bèn ba*

5b. *Ko ne ma longo sounourouba o bêtê, ka kan meleni nege nege nege ka ba ta ri dèn wa ri bèn ba*

6a. *Ee, mwo Mouso bwe, bo si na a donna kamelen ya wo yen a nyo wa na (2x)*

6b. *Ee, mwo Mouso bwe, bo si na a donna kamelen ya wo yen a nyo wa (2x)*

7a. *A yè ka ba bou ma ba na mouso bwe yé ka bo kouma ba na*

7b. *A yè ka ba bou ma ba na djeneba ye ka ba kouma ba na*

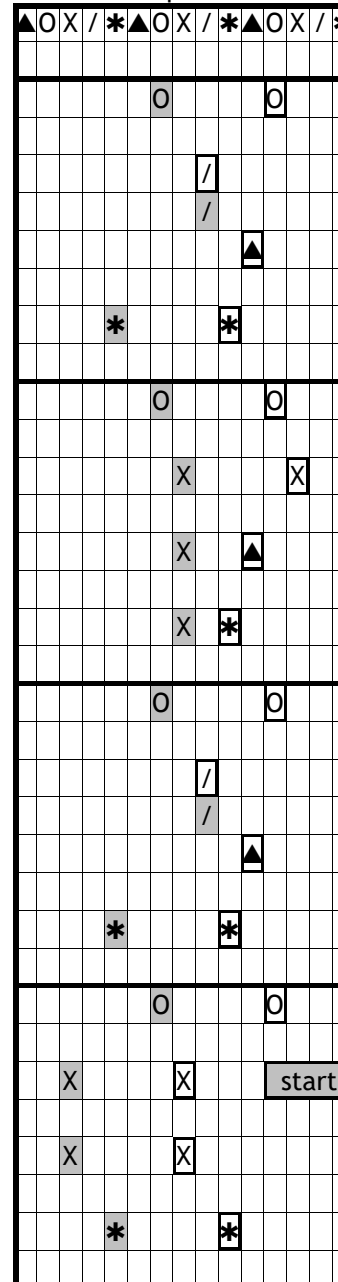
8 . *Na ma nye ne ma ne koko na dja (nè) (2x)*

Possible percussion accompaniment:

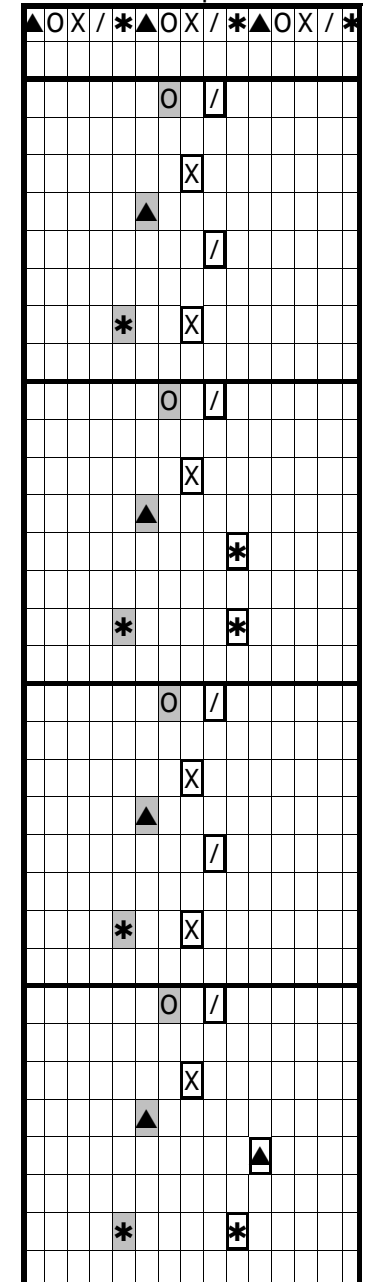
Bara (Djembé)	•	•	•	•	•	•	•	•	•	•	•	•	•	•	•	•	•	•	•
Baradoundoun																			

Sources: Lessons from Oumarou Bambara (say 'Mandela'), Bobo Dioulasso, Burkina Faso, January 2020.

Pattern A
accompaniment



Pattern B
solo accompaniment



Song 1
with pitches for singing

	/	*	▲	○	X	/	*	▲	○	X	/	*
tsja					X							
ba			▲									
ro			▲									
fo			▲									
la				○								
ko					X							
no					X							
ba					X							
ra					X							
ba					X							
i					/							
bo					/							
lo					/							
bon				○								
ka				○								
ba										▲		
ya										▲		
djou										▲		
rou										*		
kan					/							
gne					X							
wa					X							
tsja					X							start
tsja					X							

Melody 1 / Somng 1
(with with connection to Pattern B)

	/	*	▲	○	X	/	*	▲	○	X	/	*
tsja				○	/							
ba					x							
ro			∧									
fo					/							
la		*			x							
ko				○	/							
no												
ba					x							
ra			∧									
ba							*					
i												
bo		*			*							
lo												
bon				○	/							
ka					x							
ba			∧									
ya					/							
djou		*			x							
rou												
kan				○	/							
gne					x							
wa												
Melody 1				X						X		
					X					X		

	/	*	▲	○	X	/	*	▲	○	X	/	*
					X					X		
			▲							▲		
			▲							▲		
				○						○		
					X					X		
					X					X		
					X					X		
					X					X		
					/					/		
					/					/		
				○						○		
					X					X		
			▲							▲		
			▲							▲		
		*			*							
	/			/								
	X			X								
tsja					X							Song 1
tsja					X							

Song 2a and 2b
with pitches for singing

	/	*	▲	○	X	/	*	▲	○	X	/	*
yé				○								
na			▲									
yé					X							
(ee)					X							
(ee)			▲									
a					X							
wa			▲									
a		*										

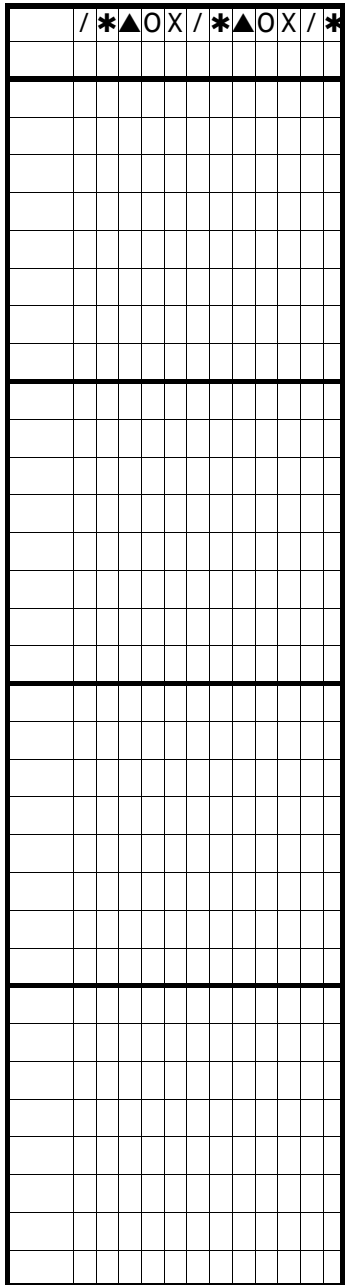
Melody 2a / Song 2a
(with with connection to Pattern B)

Melody 2b / Song 2b
with with connection to Pattern B

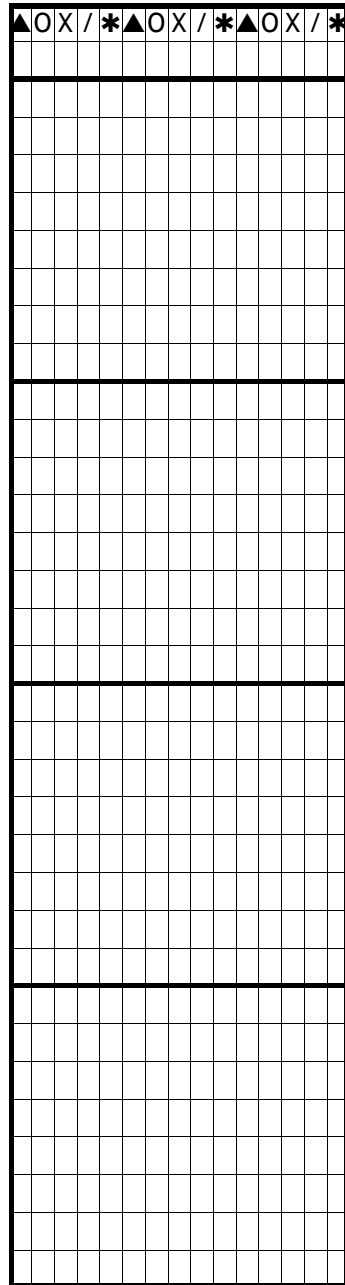
Song 2c
with pitches for singing

Melody2c / Song 2c
with with connection to Pattern

Notes



Notes



Intro

