

# Sin Té Kono Fè

(last edited on 30 March 2021)

*Sin Té Kono Fè (Sinti Konofe)*, a rhythm with song for balafon from Burkina Faso / Mali. It's an old Bambara / Dioula number. In the song a few sentences are sung from a larger story. Those sentences contain important metaphors and life lessons that are important in that story. "Although the bird cannot breastfeed, Mother Nature makes sure that the little ones don't starve" (1). "The Baby (*mounouma*) crawls before it walks" (2). "Even though you are a good person, there will always be people who (try to) harm you" (3). "Only god can help". *Kono* = birds, *Sin Té* = without resources.

(1) *Sin Té Kono Fè allah ba den balo*

(2) *Son mi tie na djougoubo la na,*

(or sung by a Bwaba: *Son mi tie ra djougouba lai ra*)

(3) *Dembe Mounouma ka soro ka ta ma*

Pattern C is used to announce this part of the song:

*Kono ni ne djo tigillele (/ yéne to di kele yé), ne mana po i ti ke allah ye*

*Kono ni ye, lou ba la kono ni ye, djigike alla yé,*

**Sources:** Lessons from Inizo Julien Coulibali and Hakiri Koeta in Burkina Faso.  
Singing at several places in Burkina Faso,  
Book: 'Die stimme der Balafon' (Moussa Hema / Adrian Egger), CD Foofango

## Ninki Nanko

A song from Senegal by Toure Kunda: "Casamance au clair de lune". The song can be sung well with the rhythm of Sin Té Ko Fè:

*A Iya oo wayo, Iya oo wa net*

*Dau na sa ne koulo bou te, Kou lo bou ten te ben donna*

*Ninki Nanko bino bala, bala bino bala te mouso la*

*A Iya oo wayo, Iya oo wa net*

(Play the tam-tam for me, to make me stronger,  
Because Ninki Nanko the dragon is not far away)

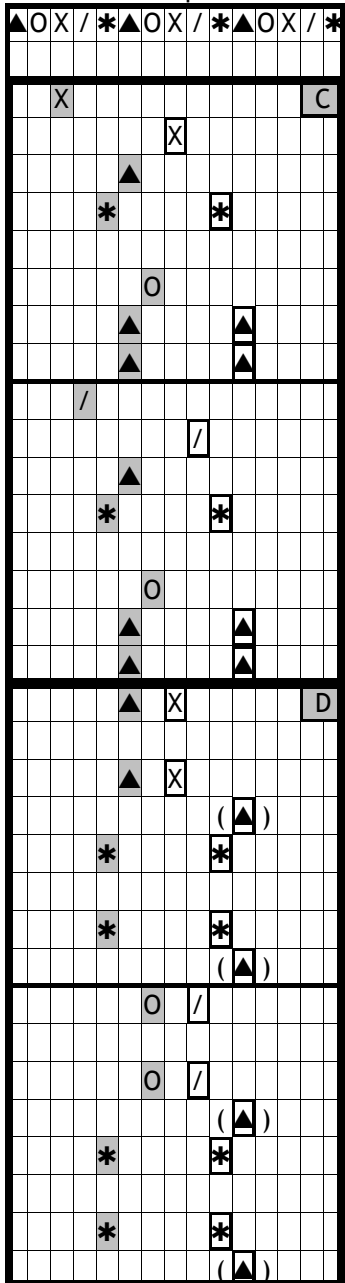
Possible percussion accompaniment:

Lounga	●	○	●	●
Shaker	*	⊛	*	⊛

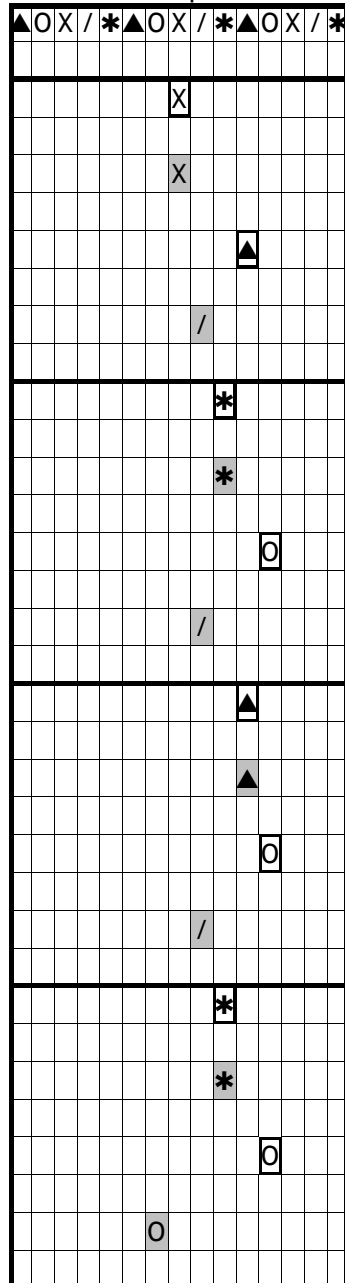
## Pattern A1 & A2 accompaniment

## Pattern A3 accompaniment & B1 solo accompaniment

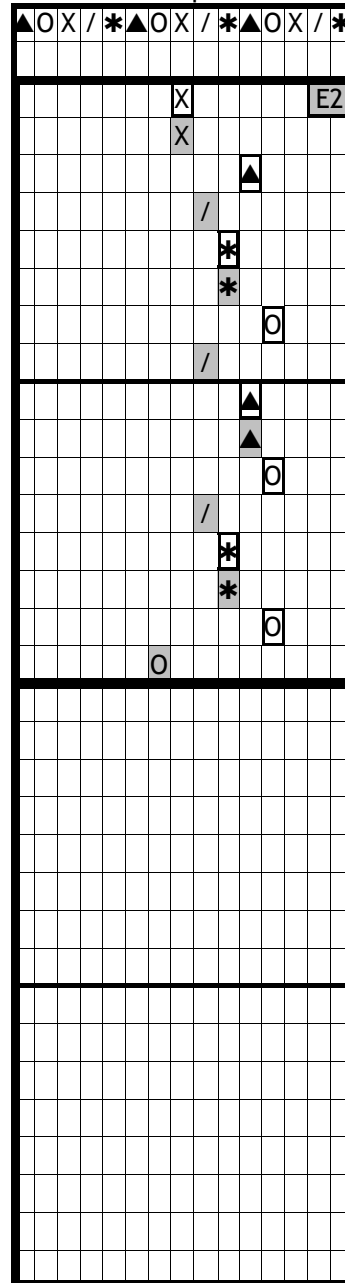
Pattern C& D  
solo accompaniment



Pattern E1 (slow)  
solo accompaniment



Pattern E2 (fast)  
solo accompaniment



Pattern F1 (slow) &  
F2 (fast) solo accompaniment

